

# GRUPO MARTINS

---

The best logistics are the ones that bring people together.



Founded in 1993 by businessman Lourival Martins, as a customs clearance company. And today, it operates the provision of services throughout the foreign trade chain.

**Grupo Martins is among the top 10 logistics operators in Brazil and is considered the No. 1 in the world by Toyota Japan's expert assessment.**

**ABOUT US**

# OUR PROPOSAL

*Our goal is to solve supply chain challenges.*

## MISSION

Provide services and solutions in the area of logistics, establishing a relationship of trust and partnership with customers.  
Create a work environment that inspires and motivates employees to perform their tasks and activities with excellence and pride.

## VISION 2030

To be recognized by the market as the Brazilian company with the greatest capacity for innovation and global logistics efficiency.

## VALUES

Social responsibility, transparency, teamwork.

# STRUCTURE

## Head Office and Distribution Center

- Poá, SP

## Branches

- Santos, SP
- VCP Airport, SP
- GRU Airport, SP
- Tatuapé, SP
- Rio de Janeiro, RJ
- Itajaí, SC

## Exterior

Mercosul, China, EUA and other regions and countries.

MARTINS LOGÍSTICA INTERNACIONAL



## Partner Operations

Operations throughout Brazil.

# OUR SERVICES

## **We operate in several sectors:**

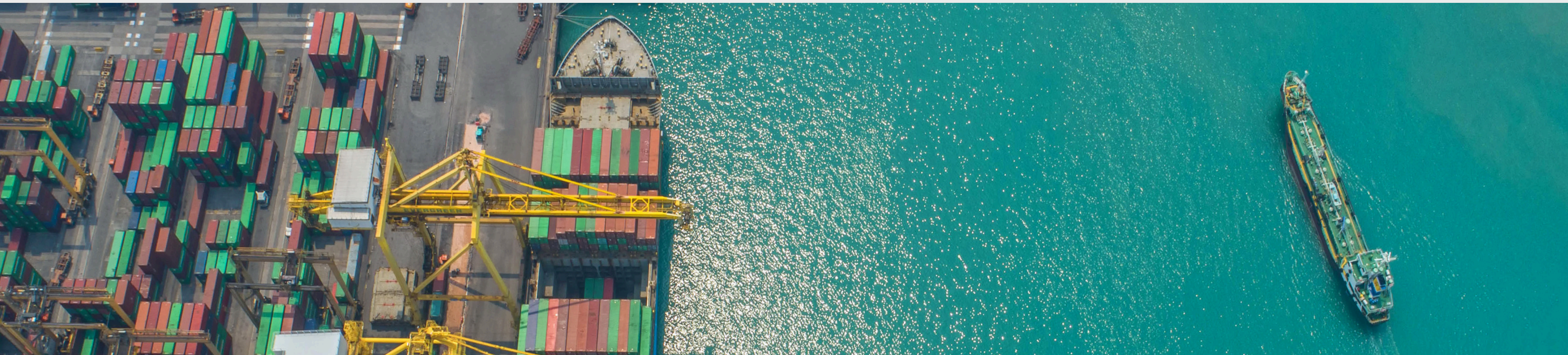
Automotive, Retail and Wholesale,  
Pharmaceuticals and Cosmetics,  
Machinery and Equipment, Trading,  
Food, Technology, Electronics, Textiles,  
Biochemicals, Cleaning.

- **FREIGHT FORWARDING;**
- **GENERAL WAREHOUSE;**
- **CUSTOMS ADVISORY;**
- **EXCHANGE;**
- **CUSTOMS CLEARANCE;**
- **DISTRIBUTION OF GOODS;**
- **INTERNATIONAL SHIPPING;**
- **RADAR;**
- **ROAD HAULAGE.**

# CUSTOMS CLEARANCE

MARTINS LOGÍSTICA INTERNACIONAL

1. **Import and export;**
2. **Tax consulting and tax classification;**
3. **Drawback;**
4. **Bonded warehouse;**
5. **RECOF;**
6. **Radar;**
7. **Special, atypical and ex-tariff regimes;**
8. **Admission and temporary export.**



# EXCHANGE

1. Closing of foreign exchange in import, export and financial operations;
2. Area specialized in foreign exchange and capital consulting;
3. Partnership with financial institutions;
4. Agility in execution;
5. Competitive rates.

# INTERNATIONAL SHIPPING

**Associated with WCA.**

Global performance in international freight forwarding, by sea and air in import and export.



# ROAD HAULAGE

MARTINS LOGÍSTICA INTERNACIONAL

1. Management of own fleet with more than 100 pieces of equipment;
2. Ports and Airports;
3. Customs Transit (DTA)
4. International Shipping;
5. Distribution;
6. Perishable cargo.





# GENERAL WAREHOUSE

MARTINS LOGÍSTICA INTERNACIONAL

Certificates:



# DISTRIBUTION CENTER - POÁ, SP

1. 11.000 m<sup>2</sup> total area

2. 8.500 m<sup>2</sup> built area:

3. 7.250 pallet positions;

4. 18 docks;

5. 12m<sup>2</sup> ceiling height;

6. Administrative building.



# OUR CUSTOMERS



TOYOTA



EST. 1948  
**PRIMA**  
FOODS

L'ORÉAL



HONDA

MSE



Puket

zissou  
DORMIR  
& VIVER



  
LACOSTE

**CROMUS**<sup>®</sup>  
SOLUÇÃO EM EMBALAGENS

**IDEXX**  
LABORATORIES

**Continental** 

 TOYOTA TSUSHO

 **Nilfisk**<sup>®</sup>

MARTINS LOGÍSTICA INTERNACIONAL

# ZERO STROBBER Y RATE

## PROJECT DRACENA

São Paulo

3 MONTHS

750 CONTAINERS

## PROJECT CIRANDA 1, 2, 3

São José do Belmonte (PE)

4 MONTHS

497 CONTAINERS

## PROJECT ROYECTO CIRANDA

4, 5, 6

São José do Belmonte (PE)

4 MONTHS

392 CONTAINERS

## PROJECT LAVRAS

Sítios Novos (CE)

2 MONTHS

213 CONTAINERS

## PROJECT JAIBA

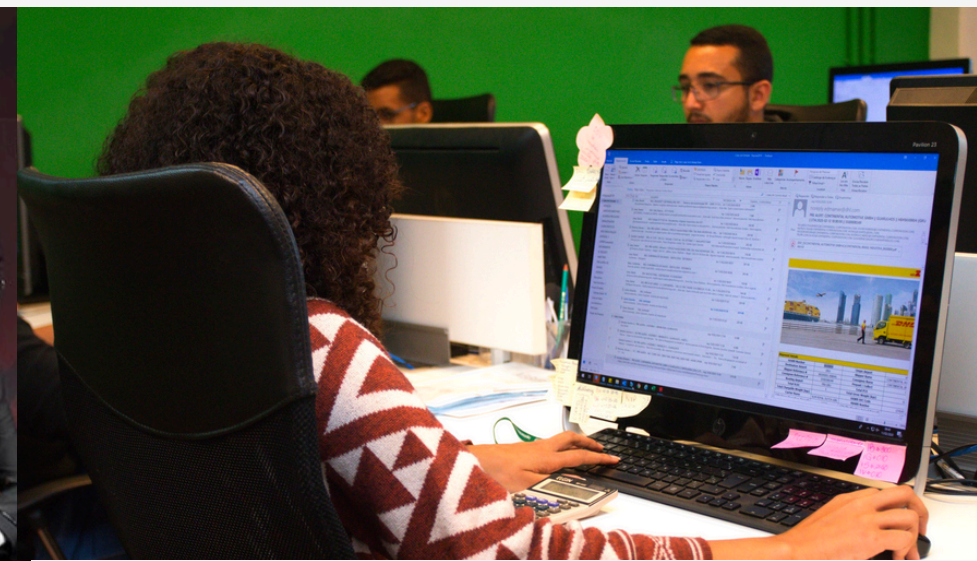
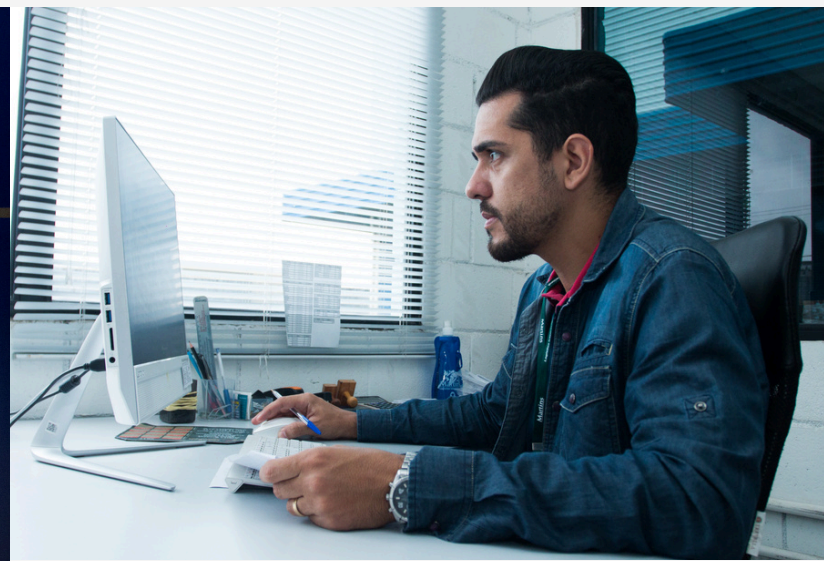
Jaiba (MG)

3 MONTHS

147 CONTAINERS

MARTINS LOGÍSTICA INTERNACIONAL

# HIGHLY SPECIALIZED TEAM



**9 YEARS WINNER**

**Viracopos Logistics Excellence Award**

**(2011 to 2018 and 2021)**

# CASES

Canadian  
Transport



Introduction of  
Red Bull  
energetic in  
Brazil

C&A Road  
Transport



Continental  
Transport





## Get a quote with Martins!



**(11) 3638-8200 ou (11) 94757-9553**



**comercial@martinslog.com**



**www.martinslog.com.br**



**@martinsloginternacional**