



MARTINS INTERNATIONAL LOGISTICS

The best logistics are those that bring people together.



Founded in 1993 by businessman Lourival Martins, as a customs clearance company. And today, it operates the provision of services throughout the foreign trade chain.

Grupo Martins is among the top 10 logistics operators in Brazil and is considered the No. 1 in the world by Toyota Japan's expert assessment.

ABOUT US

OUR PROPOSAL

Our goal is to solve supply chain challenges.

MISSION

Provide services and solutions in the area of logistics, establishing a relationship of trust and partnership with customers.
Create a work environment that inspires and motivates employees to perform their tasks and activities with excellence and pride.

VISION 2030

To be recognized by the market as the Brazilian company with the greatest capacity for innovation and global logistics efficiency.

VALUES

Social responsibility, transparency, teamwork.

STRUCTURE

Head Office and Distribution Center

- Poá, SP

Branches

- Santos, SP
- VCP Airport, SP
- GRU Airport, SP
- Tatuapé, SP
- Rio de Janeiro, RJ
- Itajaí, SC

Exterior

Mercosul, China, EUA and other regions and countries.

MARTINS LOGÍSTICA INTERNACIONAL



Partner Operations

Operations throughout Brazil.

OUR SERVICES

We operate in several sectors:

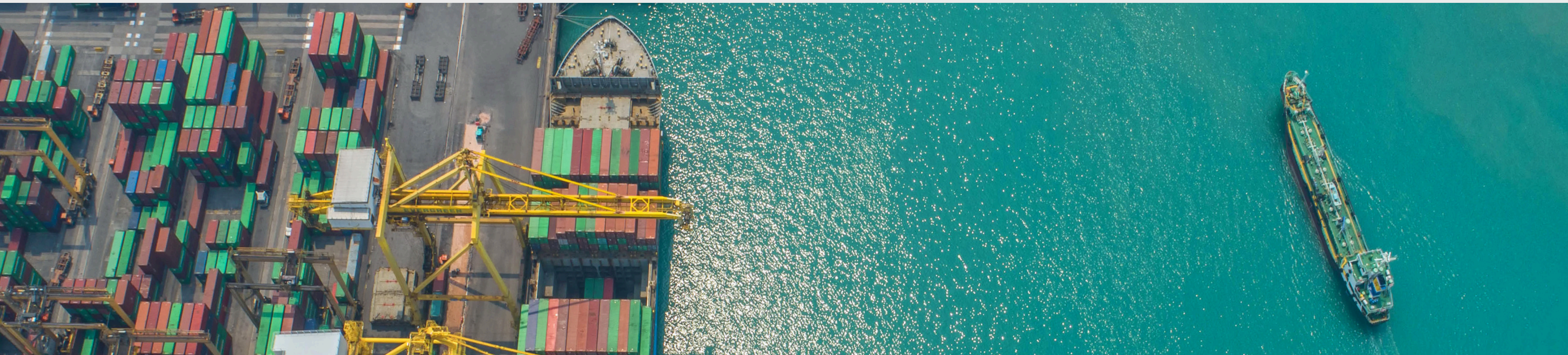
Automotive, Retail and Wholesale,
Pharmaceuticals and Cosmetics,
Machinery and Equipment, Trading,
Food, Technology, Electronics, Textiles,
Biochemicals, Cleaning.

- **FREIGHT FORWARDING;**
- **GENERAL WAREHOUSE;**
- **CUSTOMS ADVISORY;**
- **EXCHANGE;**
- **CUSTOMS CLEARANCE;**
- **DISTRIBUTION OF GOODS;**
- **INTERNATIONAL SHIPPING;**
- **RADAR;**
- **ROAD HAULAGE.**

CUSTOMS CLEARANCE

MARTINS LOGÍSTICA INTERNACIONAL

1. **Import and export;**
2. **Tax consulting and tax classification;**
3. **Drawback;**
4. **Bonded warehouse;**
5. **RECOF;**
6. **Radar;**
7. **Special, atypical and ex-tariff regimes;**
8. **Admission and temporary export.**



EXCHANGE

1. Closing of foreign exchange in import, export and financial operations;
2. Area specialized in foreign exchange and capital consulting;
3. Partnership with financial institutions;
4. Agility in execution;
5. Competitive rates.

INTERNATIONAL SHIPPING

Associated with WCA.

Global performance in international freight forwarding, by sea and air in import and export.



DEDICATED AND CONTAINER CARGO ROAD TRANSPORT

MARTINS LOGÍSTICA INTERNACIONAL

1. Management of own fleet with more than 100 pieces of equipment;
2. Ports and Airports;
3. Customs Transit (DTA)

4. International Shipping;
5. Distribution;
6. Perishable cargo.
7. OMNILINK tracking technology



GENERAL WAREHOUSE

MARTINS LOGÍSTICA INTERNACIONAL

Certificates:



DISTRIBUTION CENTER - POÁ, SP

1. 11.000 m² total area
2. 8.500 m² built area:
3. 7.250 pallet positions;
4. 18 docks;
5. 12m² ceiling height;
6. Administrative building.



OUR CUSTOMERS



TOYOTA



EST. 1948
PRIMA
FOODS

L'ORÉAL



HONDA

MSE



Puket

zissou
DORMIR
& VIVER




LACOSTE

CROMUS
SOLUÇÃO EM EMBALAGENS

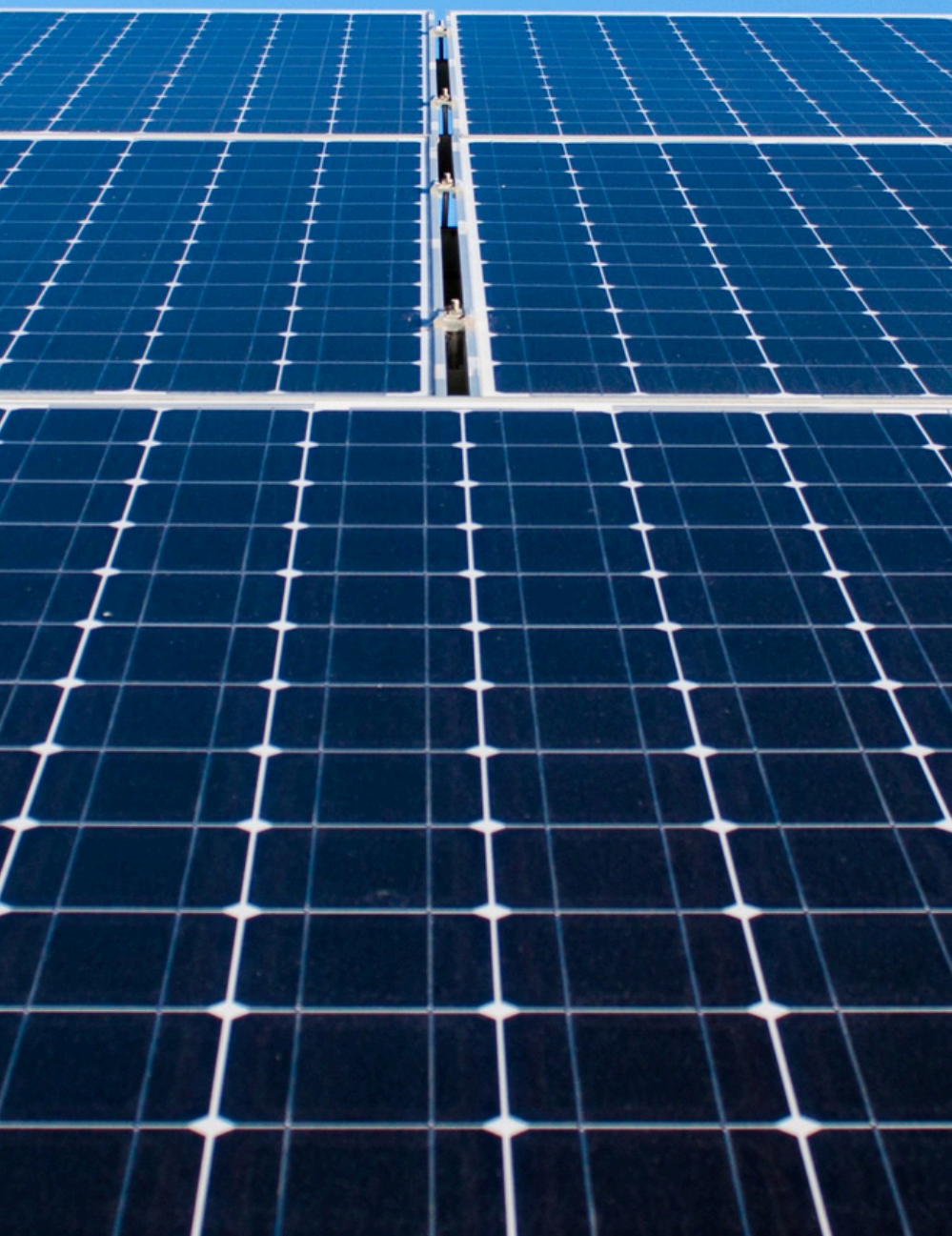
IDEXX
LABORATORIES

Continental 

 TOYOTA TSUSHO

 **Nilfisk**

ZERO STROBBER Y RATE



PROJECT DRACENA

São Paulo

3 MONTHS

750 CONTAINERS

PROJECT CIRANDA 1, 2, 3

São José do Belmonte (PE)

4 MONTHS

497 CONTAINERS

PROJECT ROYECTO CIRANDA

4, 5, 6

São José do Belmonte (PE)

4 MONTHS

392 CONTAINERS

PROJECT LAVRAS

Sítios Novos (CE)

2 MONTHS

213 CONTAINERS

PROJECT JAIBA

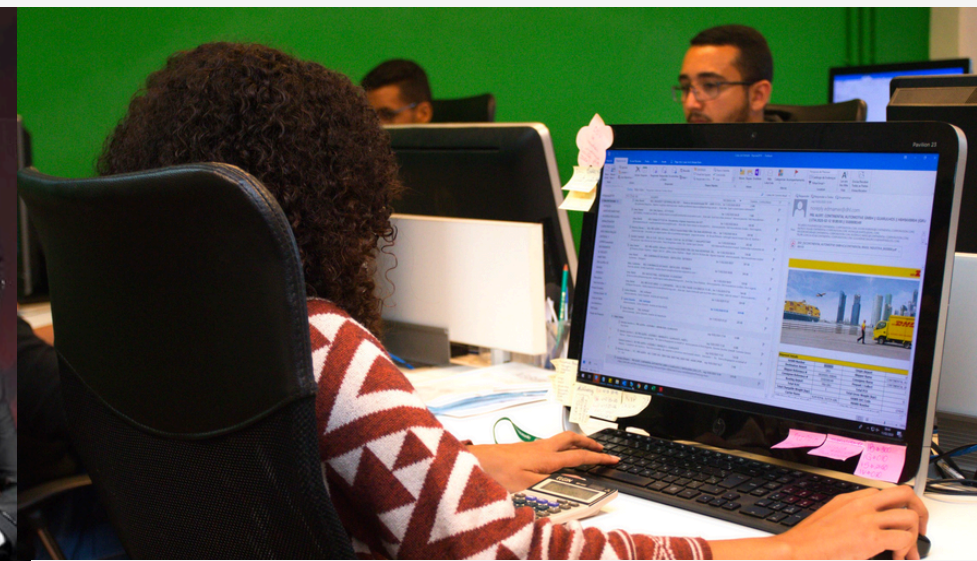
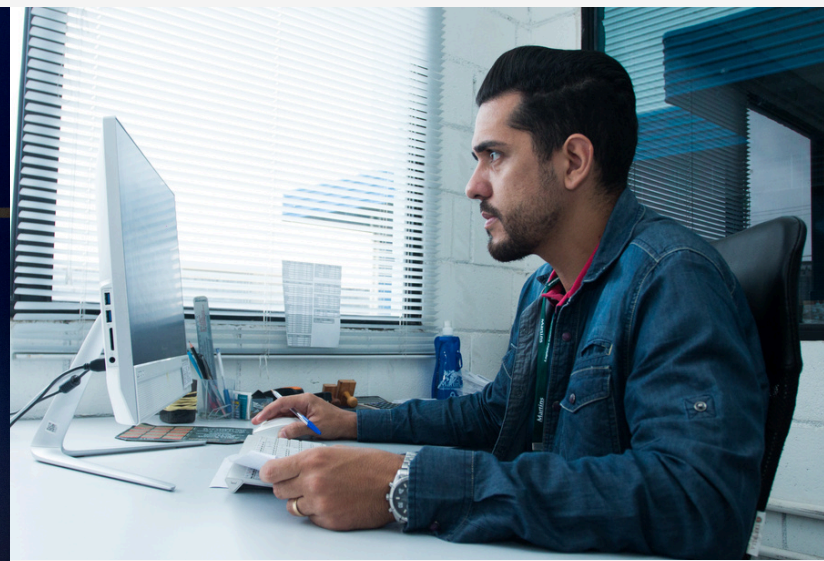
Jaiba (MG)

3 MONTHS

147 CONTAINERS

MARTINS LOGÍSTICA INTERNACIONAL

HIGHLY SPECIALIZED TEAM



A team of 250 employees

9 YEARS WINNER

Viracopos Logistics Excellence Award

(2011 to 2018 and 2021)

CASES

Canadian
Transport



Introduction of
Red Bull
energetic in
Brazil

C&A Road
Transport



Continental
Transport





Get a quote with Martins!



(11) 3638-8200 ou (11) 94757-9553



comercial@martinslog.com



www.martinslog.com.br



@martinsloginternacional